

Fort La Bosse S.D.

PO Box 1420

Virden, MB

ROM 2CO

ph. 748-2692

fax 748-2436

email:

flbsd@flbsd.mb.ca

www.flbsd.mb.ca

R. Barry Pitz

Superintendent

Why Fort La Bosse?



Why Fort La Bosse?

- Rural area
 - Close to Brandon, which allows Teachers to continue their education
 - Close to major shopping centres

- 290 kms to Wpg
- 280 kms to Regina
- 200 kms to Minot



Why Fort la Bosse?

- **Variety of School Settings:**
 - Early Years
 - Middle Years
 - K - S4
 - S1 - S4
 - Colony Schools
 - 7 - S4
 - K - 6
 - Alternate Classroom



Plainview Colony School

Why Fort La Bosse?

- **Teaching Opportunities:**
 - First Nations Students
 - Hutterian Colony Students;
 - Town and country based students;
 - Students with Special Needs;
 - Vocational classes.
 - Alternate Program



**EXCELLENT SUBSTITUTE
TEACHING OPPORTUNITIES**

Why Fort La Bosse?

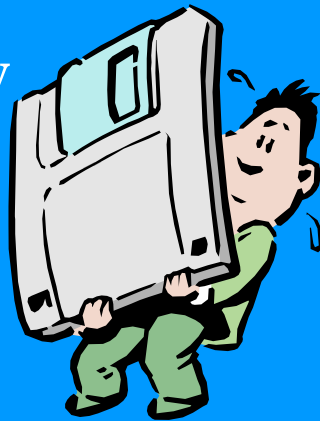
- **Curricula Support:**
 - **Curriculum, Instruction & Assessment Consultant -** .75 position
 - **Pathfinders** - our division is a leader in this field
 - **STAF** - curriculum implementation model
 - **Many PD Opportunities**-internal & external;
 - **PLC's**—Professional Learning Communities in a number of areas such as Early Numeracy, Various Book Studies, Differentiated Instruction etc.

**PD Support -
approx..
\$250.00
per FTE
Teacher
(Board)**

Why Fort La Bosse?

- **Technology Support:**

- Full time Technology Consultant
- Full time Computer Technician
- Full time Computer Technology Assistant
- Dedicated Internet Server and Website



- Technology Literacy Pathfinders

- High Speed Wireless Internet

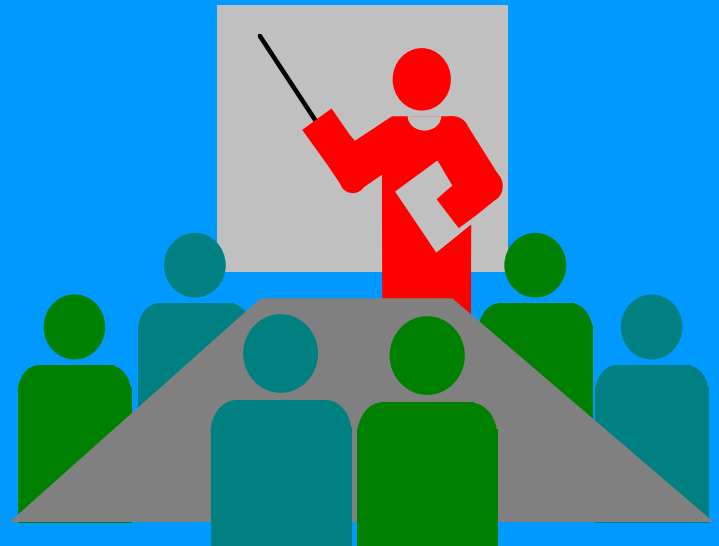
- Literacy with ICT Continuum

Low student -
computer ratio

www.flbsd.mb.ca

Why Fort La Bosse?

- **Opportunities for leadership**
 - Pathfinders
 - Young Administrators
 - School Committees
 - Divisional Committees
 - Provincial Committees



**Community
Involvement**

Why Fort La Bosse?

Student Services

- Full time Coordinator of Student Services
- Alternate Program;
- Healthy Schools Initiative;
- Special Education Suite
- Social Skills Program
- Early Literacy
- Supported Literacy;
- Multi Year Literacy Plan;
- Integration of Special Needs Students;
- Aboriginal Academic Achievement Programming;
- Clinical Services



Why Fort La Bosse?

- Great Kids!
- Safe Environments
- Small Class Sizes;
- Mentorship Potential
- Multi-Age/Multi Grade Classes
- Extra-curricular sports programs:
 - AAA & AA Schools
 - Fort La Bosse Elem. Athletic Assn.
 - Most sports: Basketball, hockey, volleyball, baseball, football, etc.

Student - Teacher
Ratio

15 : 1

(Professional Staff)



Why Fort la Bosse?

Regional Economic Indicators

- Availability of Affordable Housing
- Low unemployment
- Industries in the area
 - Agriculture
 - Oil
 - Manufacturing.



Over 250 small & medium sized businesses in our catchment area

Fort La Bosse “Quick Hits”

☺ Starting Teacher Salaries (Sept 2008):

| | |
|---------------------|----------|
| ☺ Class IV (B Ed) | \$44,868 |
| ☺ Class V (B Ed AD) | \$47,924 |
| ☺ Class VI | \$50,843 |

☺ Avg. Salary (2007- 2008):

\$61,193.45

☺ Substitute daily rate of pay:

\$120.94

Why Fort La Bosse?

- **Communities within Fort La Bosse**

| | |
|------------|-------|
| – Elkhorn | 514 |
| – Kola | 120 |
| – Oak Lake | 369 |
| – Reston | 650 |
| – Virden | 3,200 |

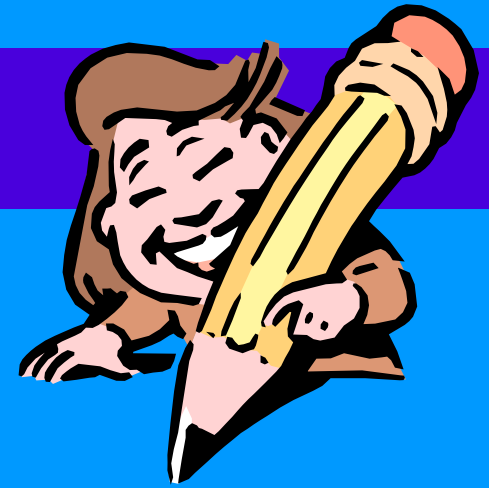


Fort La Bosse Future Needs



- **Resource Teachers**
- **Sr Yrs - Math,
Science, ELA**
- **Vocational Teacher**
Drafting, Electronics, Power
Mechanics
- **Band/Music**
- **French**
- **K - 8 Generalist**
- **Administrators**





Why Not Fort La Bosse?

